



# Sanrio Puroland Private Venues' Guide



© '76,'97,'19 SANRIO CO.,LTD.

# Sanrio Puroland Overview



First opened on December 7<sup>th</sup> 1990

Japan's first indoor/all-weather theme park

Dimensions:

Facilities area 21, 173 square meters. Constructed area ca 15,200 m<sup>2</sup>.  
Total site approximately 45,900 m<sup>2</sup> (twice the size of Nippon Budokan in Tokyo)

Capacity: 6,000 people max. (as specified by the Fire Service Act)

Location: Tama City, Tokyo / Tama Center Station of Keio or Odakyu line

Nearby Accommodation: Keio Plaza Hotel Tama

Closed: Wednesdays and Thursday (frequently closed. Please see the operation schedule <https://en.puroland.jp/#calendar> )



Tama-Center, the city of Hello Kitty,  
is about 30 minutes by train  
from Shinjuku and roughly 60 minutes from Tokyo Station.  
Sanrio Puroland  
1-31 Ochiai, Tama, Tokyo  
Tel. +81-42-339-1111  
(9:30am -5:00pm Except Closed Days)  
WEB : <https://en.puroland.jp/>

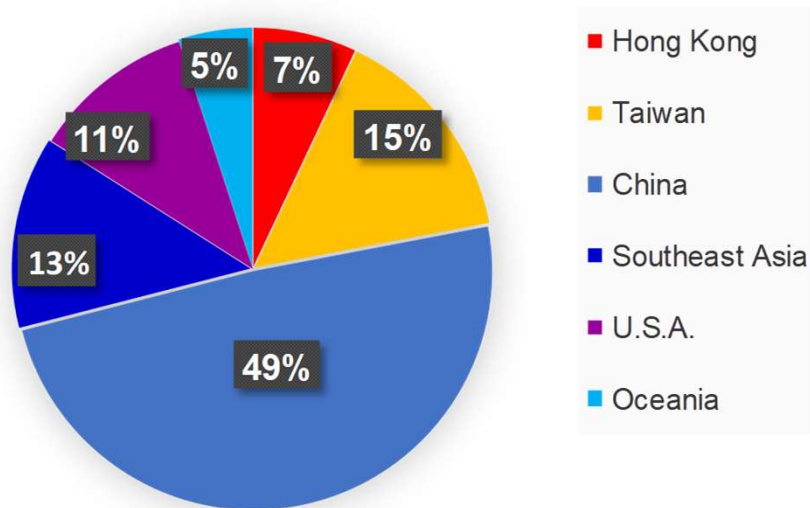


# Sanrio Puroland Overview



## Sanrio Puroland's Visitors' Breakdown

### Visitors' Regional Distribution



### Advance Ticket Price

#### 1 Day Passport (holiday/school holiday)

Adult(18~59years)	3,800JPY
Child(3~17years)	2,700JPY
Senior(60 years over)	2,200JPY

#### (weekday)

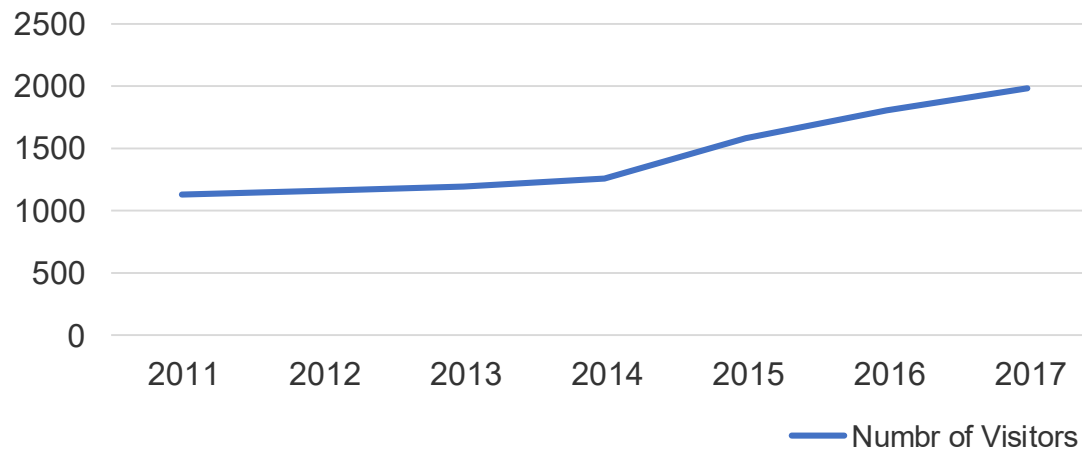
Adult(18 years over)	3,300JPY
Child(3~17years)	2,500JPY
Senior(60 years over)	2,200JPY

#### Afternoon Passport

\*Weekdays 14 : 00~

Weekends/Public holidays 15 : 00~

Adult(18 years over)	2,200JPY
Child(3~17years)	2,000JPY
Senior(60 years over)	2,200JPY



# Reserving Sanrio Puroland for Events

---



## ■ Booking the entire theme park for an event

- It is possible to use the entire park for an event
- For more information and to book please contact:

Mr. Yuya Makizato

Sales Promotion Sect. Sales Dept.

Puroland Entertainment Co. Ltd.

Email: [y-makizato@sanrio-entertainment.co.jp](mailto:y-makizato@sanrio-entertainment.co.jp)

## ■ Holding events in a limited area of the theme park

- Please find particulars on the available venues in the following slides.
- For more information and to book please contact:

Mr. Yuya Makizato (details above)



**Märchen Theatre**

1F



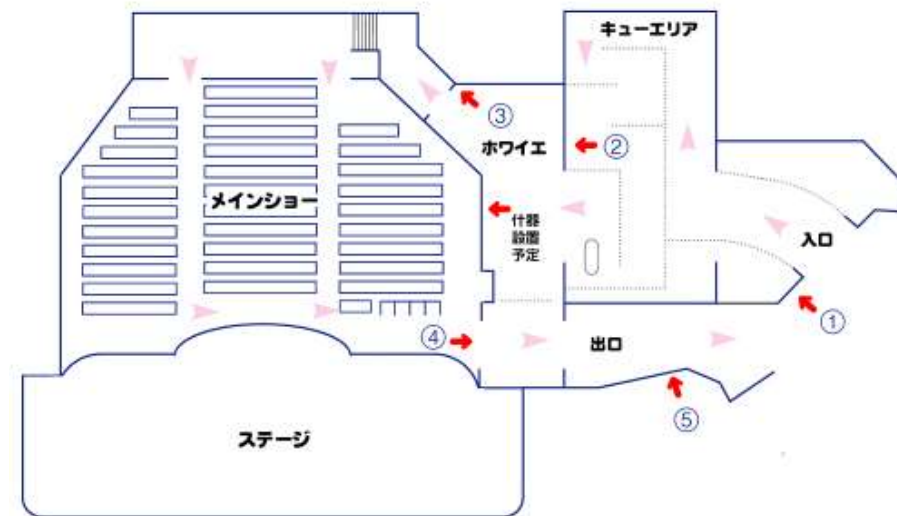


# Sanrio Puroland Venues

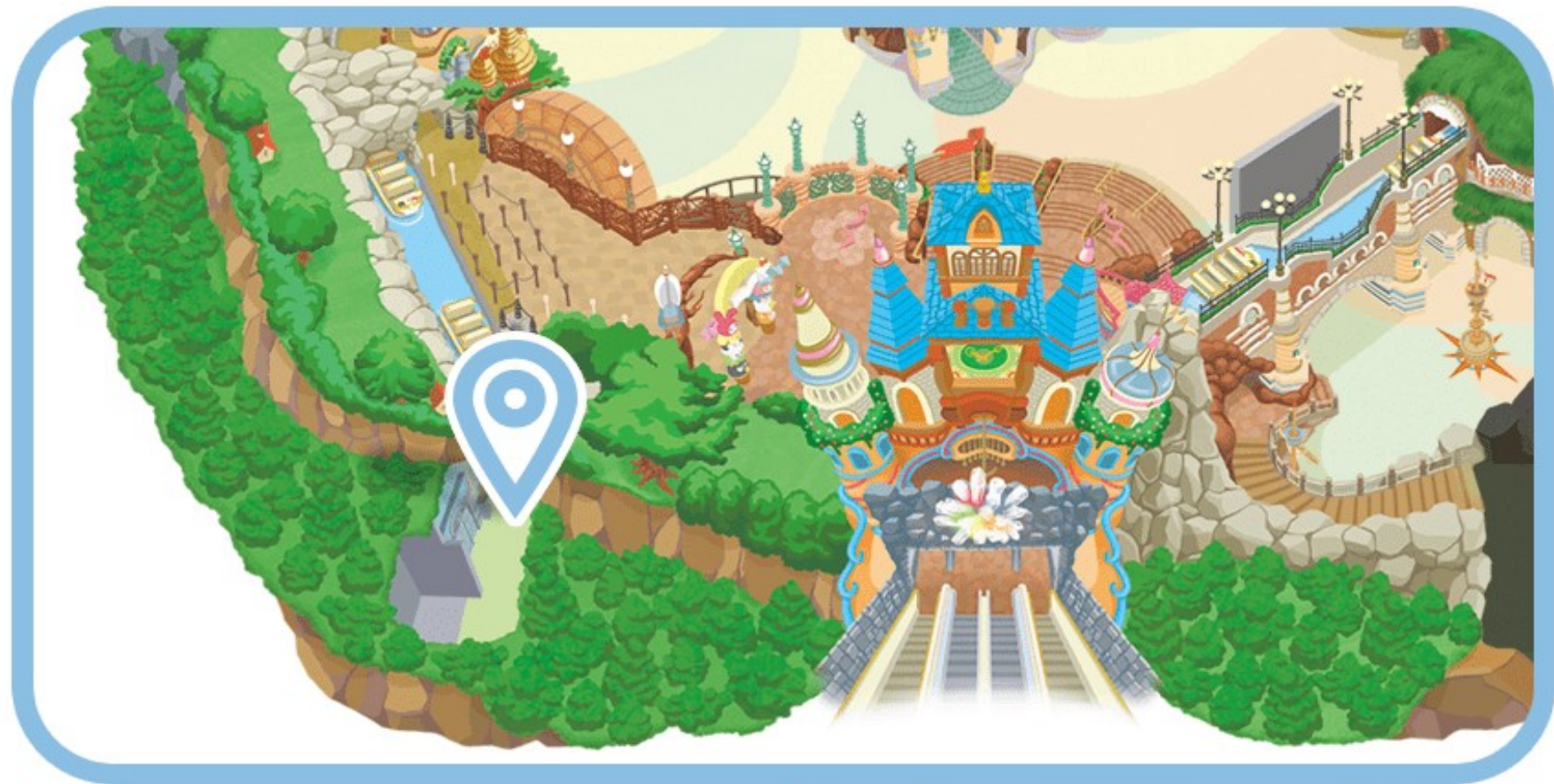


## Märchen Theatre

- 1) Venue: 1<sup>st</sup> floor Märchen Theatre
- 2) Best used for live shows or Märchen
- 3) Availability: Please consult with us the available dates and times
- 4) Rental fee: 1,500,000JPY  
Including:
  - 300 visitors' passes/ entry tickets
  - Sound & illumination operation staff
  - Venue operation staff
- 5) Rehearsal: 400,000JPY (2hours)



**【Seats: 320 Seats】**



**Fairyland Theatre**

1F





# Sanrio Puroland Venues



## Fairyland Theatre



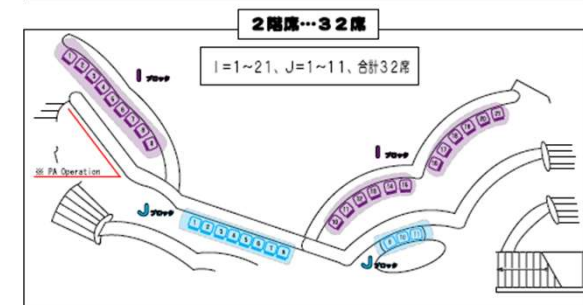
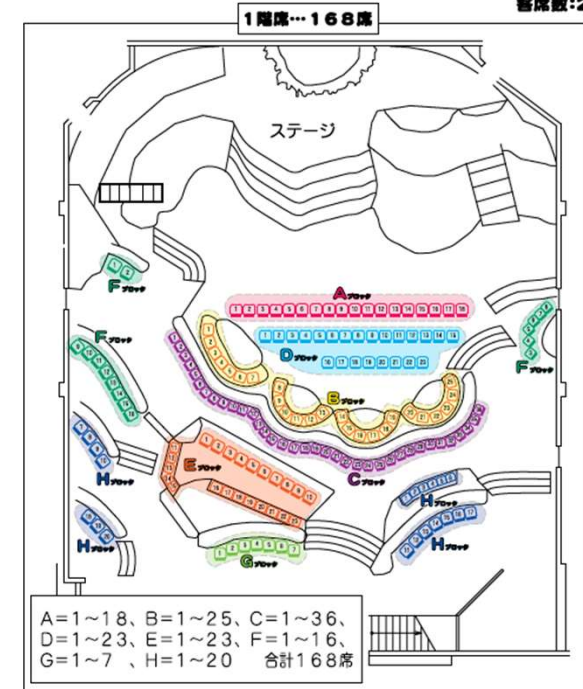
( Stage image )

- 1) Venue: 1<sup>st</sup> floor Fairyland theatre
- 2) Best used for live shows and Märchen
- 3) Availability: Please consult with us the available dates and times
- 4) Rental fee: 1,000,000JPY  
Including:
  - 200 visitors' passes/ entry tickets
  - Sound & illumination operation staff
  - Venue operation staff
- 5) Rehearsal : 300,000JPY(2hours)



### サンリオピューロランド・フェアリーランドシアター イベント座席表

客席数:200席(1F+2F)



【Seats: 200 seats】





**Entertainment Hall**

**1F**



# Sanrio Puroland Venues



## Entertainment Hall

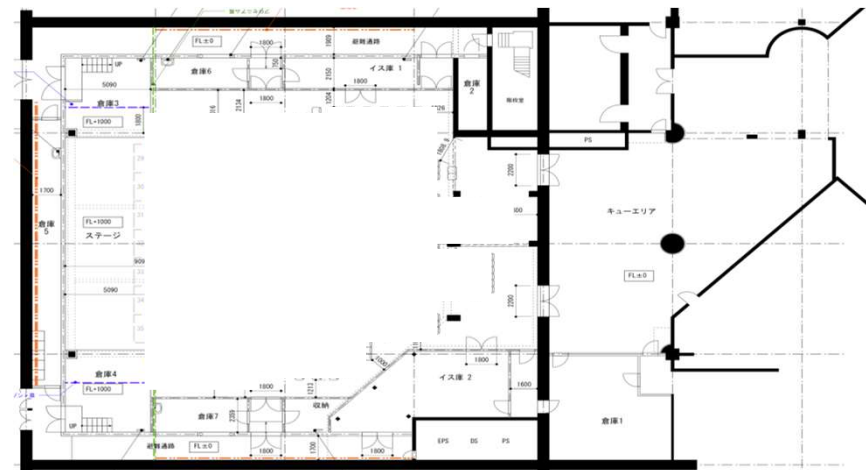


( Front entrance image )



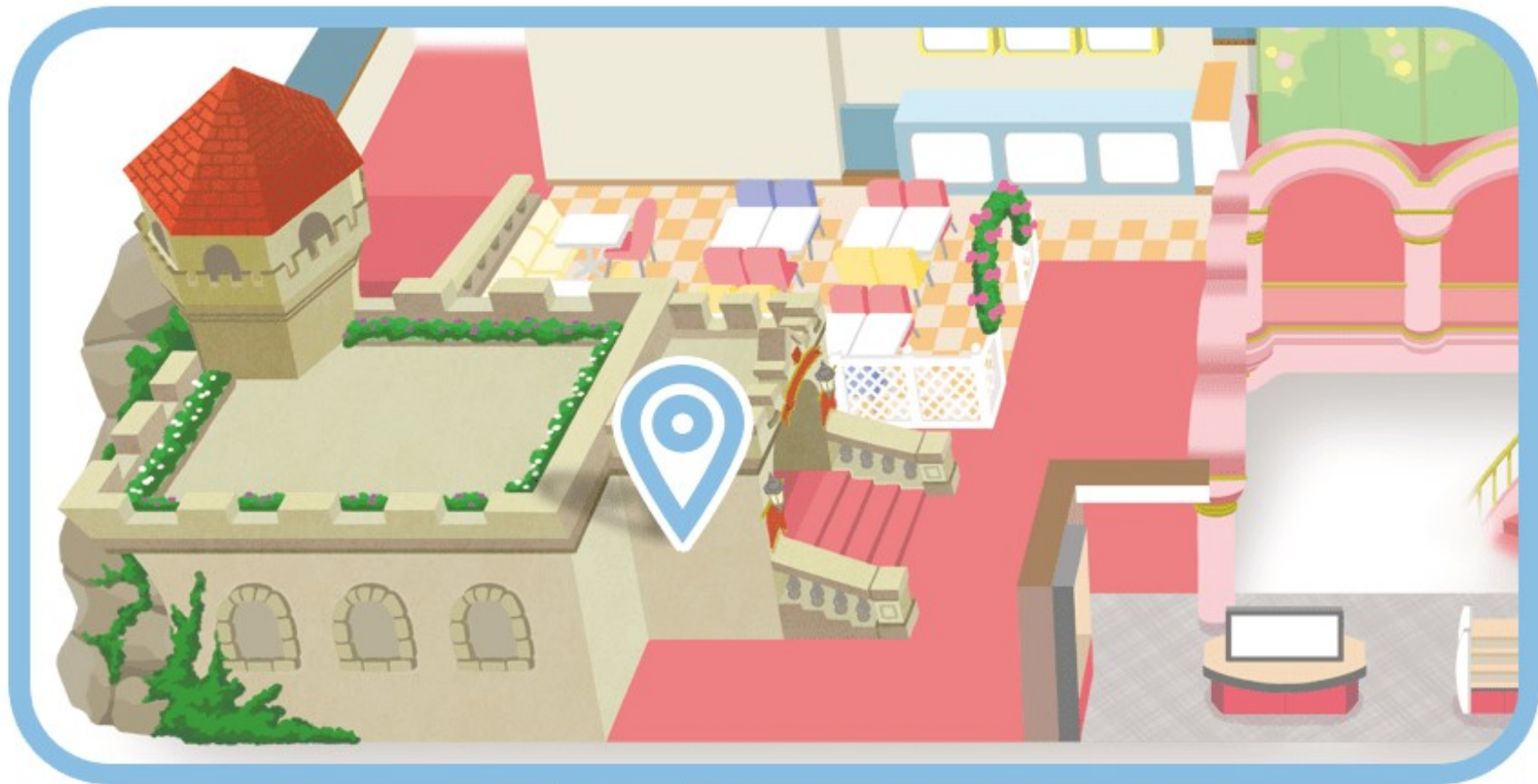
( Stage image )

- 1) Venue: 1<sup>st</sup> floor fairyland theatre
- 2) Best used for live shows and music events
- 3) Availability: Please consult with us the available dates and times
- 4) Rental fee: 1,100,000JPY  
Including:
  - 400 visitors' passes/ entry tickets
  - Sound & illumination operation staff
  - Venue operation staff
- 5) Rehearsal : 500,000JPY(2hours)



【seats;400seats】





**Yakata Restaurant**

**4F**





# Sanrio Puroland Venues



※ Capacity: 500 people standing or 350 people seated

# Banquet Plan



## ■ Availability: Please consult with us the available dates and times.

(generally only available for private after closing hours)

## ■ Venue: 4th Floor Restaurant

In case Format: Seated buffet

## ■ Fee structure (tax already included):

※ Food @ 3240 JPY/ person. Drink (free bar) @ 2,160 JPY/ person

※ Payment by cash only

※ Free bar including beer, whiskey, wine, shochu and sour

※ Customers can bring their own alcohol without cork charge

※ Character appearance: 54,000 JPY/ character (20 minutes each)

※ Minimum deposit 324,000 JPY. Example: 5,400 yen plan (meal + all you can drink) × 60

※ Acoustic lighting cost 64,800 JPY

\* During Puroland opening hours and additional fee for visitors' passes and venue rental applies.

## ■ Event schedule (example only)

17:00 Puroland closes

17:30 Participants gather / preparation

18:00 Reception

18:30 Opening remarks

Party/ Dinner starts

20:00 Character greeting (20 minutes)

20:20 Characters say goodbye

20:25 Closing remarks

20:30 Participants leave



# Cancellation Policy



## ■ Cancellation charge for venue reservations and catering service

- Once a booking has been confirmed a cancellation fee will apply.  
Please see the details below.
- If you need to change or postpone the date of your event or the number of participants the same charges will apply.

## \*Cancellation charges for venues, catering service or the Yakata restaurant

Cancellation day	Cancellation fee	Changes to number of participants
1 to 2 weeks prior to the event	20% of the estimate	No charge
7 to 2 days prior to the event	30% of the estimate	30% of meal service fee per person
1 day prior to the event	50% of the estimate	50% of meal service fee per person
The day of the event	100% of the estimate	100% of meal service fee per person